



# Middle School Transition

## Truman Middle School



# Welcome to Truman!

Dr. Mike Straatmann, Principal

Dr. Jenna Wright , Assistant Principal



# Middle School Counselors

Mrs. Carolyn O'Daniel, Counselor (6th A-K, 7th)

Mrs. Carrie Pulliam, Counselor (6th L-Z, 8th)





# Welcome to Truman!

As your child transitions into middle school, you have a lot to be excited about.

Today, we'll discuss:

- Teams
- Classes and schedules
- Exploratory, intervention, and music classes
- Getting involved at Truman
- FAQs



# Mission and Core Beliefs

**Mission:** To develop competent and caring graduates through exceptional programs, services, and personnel.

## **Core Beliefs and Commitments:**

- ▶ We believe all students can learn and succeed
- ▶ We believe in promoting ethical behavior and moral character
- ▶ We believe learning experiences should prepare students for success in the 21<sup>st</sup> century
- ▶ We believe educators should facilitate the process of students reaching their fullest potential



# Middle School Teaming

- ▶ Teaming
  - 6 Green
  - 6 Gold
- ▶ Team Courses
  - English Language Arts (ELA)
  - Math (6th or 7th grade curriculum)
  - Science
  - Social Studies
  - Physical Education/Health
    - Daily
    - LEAP Alternates with PE



# Team 6 Green

**Mrs. Kirchhoff**

English

**Mrs. Uhrhan**

Math

**Mrs. Stanton**

Social Studies

**Mr. Althage**

Science



# Team 6 Gold

**Ms. Solomon**

English

**Ms. Frank**

Math

**Mrs. Hake**

Social Studies

**Dr. Bockkopf**

Science







# Exploratory and Music

## ▶ Exploratory Classes

- Practical Arts
  - Family & Consumer Science
  - Technology Education
  - Digital Literacy
  - Keyboarding
- Fine Arts
  - Drama
  - General Music
  - Art
- World Cultures

## ▶ Daily Music – Band, Orchestra, Choir

# Digital Literacy & Keyboarding



- ▶ Software
- ▶ Design, Create, Edit
- ▶ Digital Citizenship
- ▶ Online Research
- ▶ Evaluation of Websites



# Technology Education



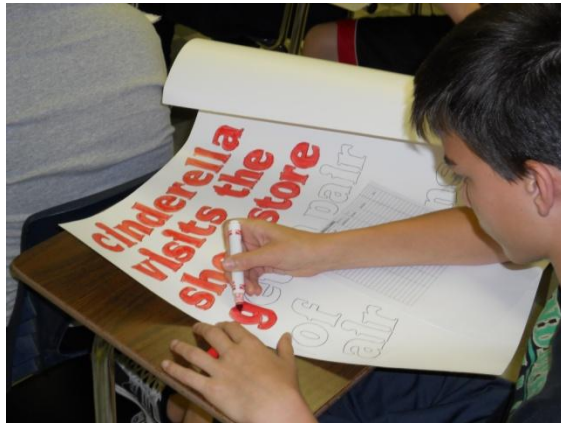


# Family and Consumer Science





# Speech & Drama, Art



# Band, Orchestra, Choir



# Sample Schedules

(Each class is 49 minutes in length)

1. Math
2. Social Studies
- 3A. Exploratory**
- 3B. Exploratory**
- 25 Minute Lunch
4. English Language Arts
5. Science
6. PE
- 7A. Exploratory**
- 7B. World Cultures**

1. Math
2. Social Studies
- 3A. Exploratory**
- 3B. Exploratory**
- 25 Minute Lunch
4. English Language Arts
5. Science
6. PE
- 7. Band**





# Middle School Interventions

- ▶ Math Lab
- ▶ Reading Strategies
- ▶ Writing Lab (push in supports)
- ▶ Academic Lab (placement during the year)



**Flyertime – As a Truman family, we value respect, responsibility and honesty in our education.**

- ▶ Multi-age Class for 23 minutes per day
- ▶ Monday-Friday
- ▶ Character Education
  - Relationships
  - Core Values
  - Service Learning
- ▶ Literacy





# Clubs and Activities

(These can change year to year)

- Builders' Club
- Drumline, Fiddlers, Jazz Band, Show Choir, Orchestra Assistants
- Robotics
- T.R.E.N.D
- Inter-District Sports
- Environmental Club
- Intramurals
- Interact
- Stem Squad
- Dance Team
- Cheerleading
- Student Council
- Yearbook



# A word from our students on surviving MS





# Normal Sixth Grade Concerns

- **Lockers**-You will practice with your teachers
- **Tardies**-classes are all in close proximity
- **Lunch**-you go as a class/team and eat together
- **Class Changes**-you will review schedules before leaving each class
- **Dressing Out**-everyone dresses out and you will get used to it





# Typical Parental Concerns

- ▶ **Many Teachers** – open communication: email, phone calls
- ▶ **No Recess** – time at lunch, movement between classes, daily PE, multiple clubs and activities
- ▶ **No Parental Involvement** – A myth
- ▶ **Peer Pressure** – adult support and ongoing communication with your child
- ▶ **Homework** - yes, students will have but it is meaningful practice for students



# Additional Parent Concerns

- ▶ **Cliques** – opportunity to meet new friends
- ▶ **Big school** – teams make a larger school seem small
- ▶ **Changes in Child** – physical and biological transitions
- ▶ **Organization** – agenda books; technology resources: teacher websites, Remind 101
- ▶ **Safety** – Cameras, Drills, Staff Development
- ▶ **Technology**.....



# Resources at Truman MS

- ▶ Principal - Dr. Straatmann
- ▶ Assistant Principal – Dr. Jenna Wright
- ▶ Counselors – Mrs. Pulliam & Mrs. O’Daniel
- ▶ Social Worker – Michelle Studer
- ▶ School Resource Officer - Officer Jeff Kriska
- ▶ Team and Exploratory Teachers
- ▶ Any Adult in the School!

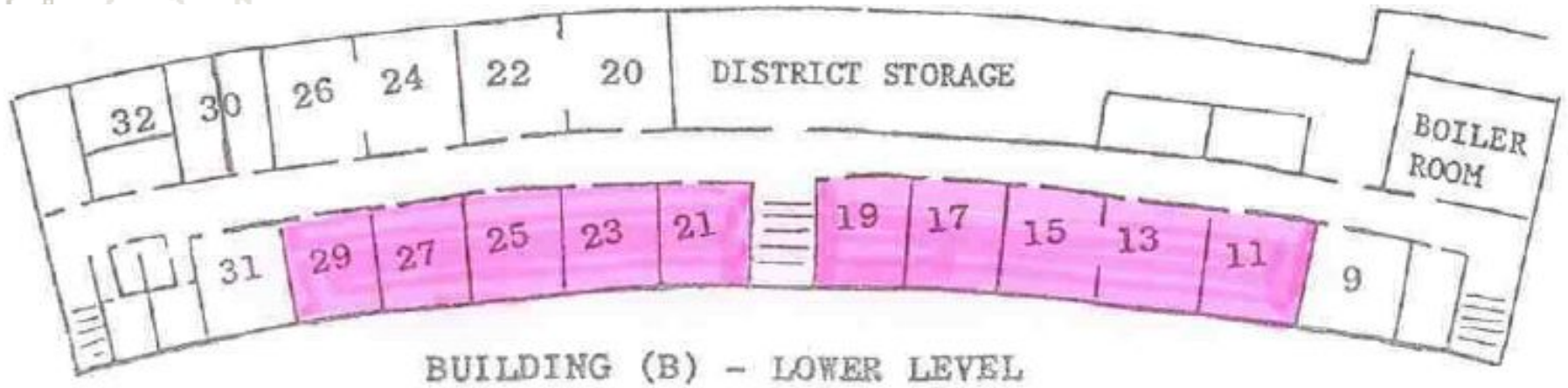


# Important Dates for Transition

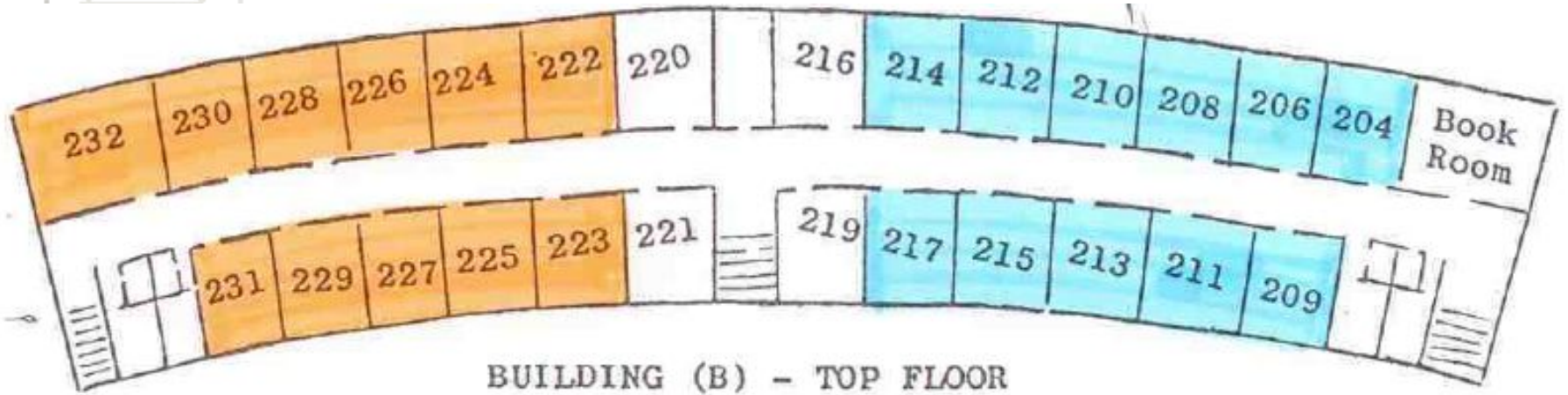
- **April 23rd**  
5<sup>th</sup> Grade Parent Orientation at Truman
- **May 4th**  
All 5th grade students visit Truman
- **August 10th**  
Transition Day at Truman
- **August 16th**  
First Day of Middle School!!!



# 6<sup>th</sup> Grade Floor-Lower Level

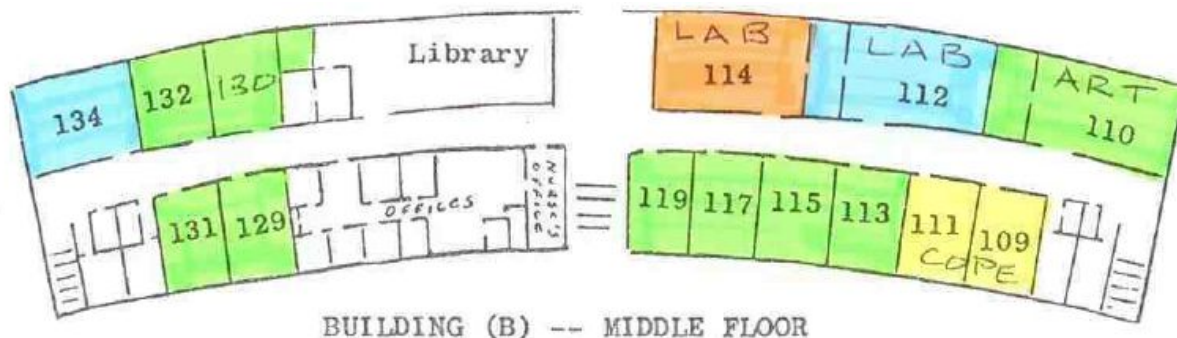
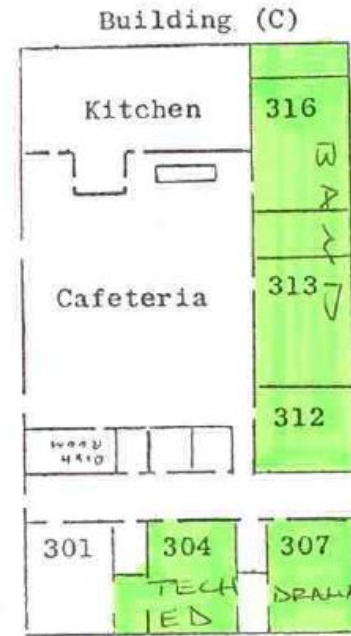
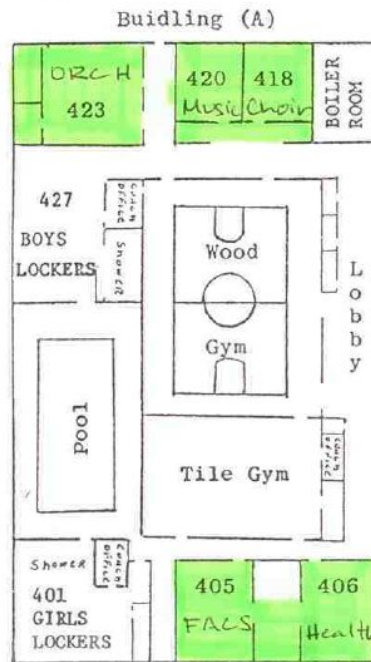


# 7<sup>th</sup> & 8<sup>th</sup> Grade Floor-Top Level



BUILDING (B) - TOP FLOOR

# Exploratory-Main Level





Questions???



# Building Tour

